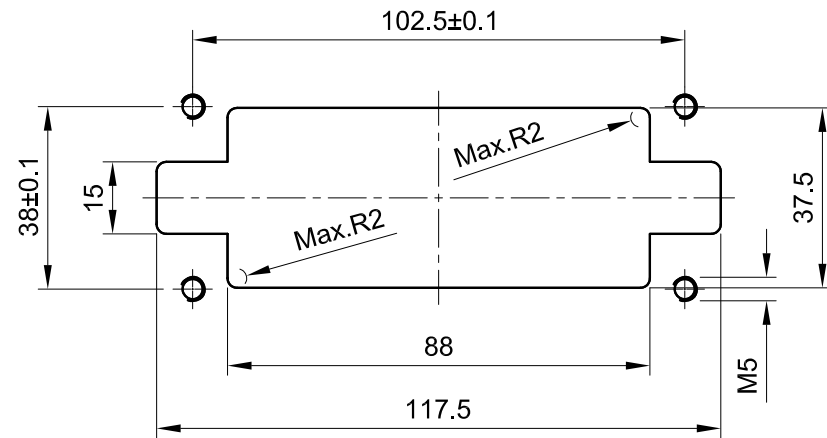
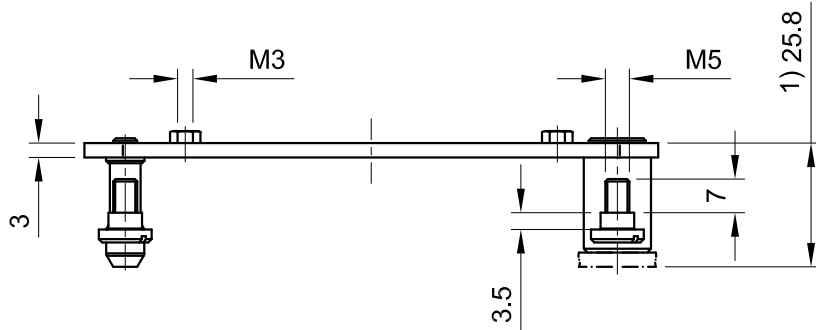




Panel cut out/面板开孔尺寸



1) Distance for electrical and FOC contacts max. 27mm
for pneumatic contacts max. 26.5mm

 InKonn (Suzhou) Electric Technology Co.,Ltd.	 All Dimensions in mm Original Size DIN A4	Date 2019-09-29	Drawing No. TC8558027	Rev. A00	Scale 1:1.5
	Type Name DFB16	Part No. 10 11 016 8900	Created by Shuxu Huang	Checked by Yiyi Luo	Page 1/1